



Lycopene

Lycopene belongs to a class of compounds known as the carotenoids, which are the yellow, orange, and red pigments synthesized in plants. Their function in plants is to absorb light in photosynthesis, protecting plants against photosensitization. The five principle carotenoids found in human plasma, as the result of ingesting plants, include alpha and beta-carotene, beta-cryptoxanthin, lutein, and Lycopene. Over 600 carotenoids have been identified to date.



Lycopene Sources

Lycopene is what gives tomatoes, pink grapefruit, watermelon, and guava their red color. It has been estimated that 80% of the lycopene in the US diet comes from tomatoes and tomato products like tomato sauce, tomato paste, and catsup. Tomato and tomato products are the single best source of lycopene. In tomatoes, lycopene content is affected by the specific variety of tomato and by ripening stage. Deep red varieties contain up to 50 mg/kg, while yellow tomatoes may be as low as 5 mg/kg. Bioavailability of lycopene is improved with cooking. Lycopene availability is improved in cooked tomatoes compared to raw. The presence of fat in the diet improves lycopene absorption.

History

Lycopene was largely ignored for decades because of its lack of provitamin A activity, long thought to be the distinguishing characteristic among carotenoids. In the 1960's, during a case study which first documented lycopopenemia, an accumulation of lycopene in the body tissues, the following was said:



“So far little is known. Lycopene is neither toxic nor beneficial, but is only an adventitious visitor to the body. Its failure to form vitamin A may account for its accumulation in the liver.”



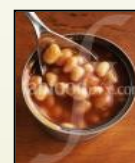
Lycopene Intake

American lycopene intake averages 3.1-3.7 mg/d, closely matching beta-carotene. In contrast, British intake averages 1.1 mg/d and that for Finns is even lower at .7 mg/d.

Lycopene Content of Selected Foods



Food	Serving	Lycopene (micrograms)
Tomato Paste, Canned	1 cup	75,362
Tomato Puree, Canned	1 cup	54,385
Marinara Sauce	1 cup	39,975
Tomato Soup, Canned	1 cup	25,615
Vegetable Soup, Canned	1 cup	23,337
Tomato Juice, Canned	1 cup	21,960
Watermelon, Raw	1 wedge	12,962
Tomatoes, Raw	1 cup	4,631
Ketchup	1 tablespoon	2,551
Pink Grapefruit, Raw	1/2 grapefruit	1,745
Baked beans, Canned	1 cup	1,298
Sweet red pepper, Raw	1 cup	459



Biological Activity

Carotenoids are protective against chronic diseases which are thought to be caused by damage from free radicals. Free radicals are molecules with an unpaired electron in their outer atomic orbital, causing the molecule to be extremely reactive. Carotenoids prevent oxidative damage in biological systems, such as damage to the cell membrane and other structures, DNA molecules, lipids, and proteins.



Environmental sources of free radicals include:

- Environmental toxins and air pollutants, such as ozone and nitrogen dioxide
- Sunlight
- Ionizing radiation
- Certain drugs
- Cigarette Smoke





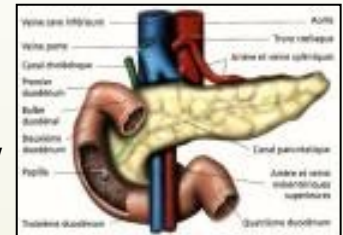
Digestive tract cancers

Esophageal, gastric, and pancreatic

As early back as 1979, researchers in Iran reported that weekly tomato consumption was associated with a 40% reduction in risk for esophageal cancer.

In 1989, a case controlled study of 2,175 participants was conducted in Italy in order to assess the geographic variation in mortality rates from gastric cancer. Tomato products seemed to show a significant inverse relationship with the occurrence of gastric cancer.

In one case–controlled study of 44 matched control subjects and 22 diagnosed cases of pancreatic cancer, it was found that the greatest difference between controls and cancer cases was in serum lycopene concentrations. Researchers found that low serum lycopene was significantly correlated with pancreatic cancer.



Prostate Cancer

There is a strong link between lycopene and prostate cancer. Using the cumulative average of the three dietary questionnaires used in the Health Professionals Follow-Up Study (HPFS), it was determined that lycopene intake was associated with reduced risk of prostate cancer. Intake of tomato sauce, the primary source of bioavailable lycopene, was associated with an even greater reduction in prostate cancer.

Bladder, Cervical, Breast, and Lung cancers

Studies have shown that the risk for bladder cancer increased with decreases in serum levels of both lycopene and selenium. For breast, lung, and cervical cancers, results have been mixed, with some research indicating possible links between lycopene and cervical cancer. The same is true of possible links between lycopene and breast cancer.



Cardiovascular Disease

Oxidative damage is believed to be the underlying mechanism in the etiology of cardiovascular disease (CVD). More recently, the multifaceted role of oxidatively modified LDL has been proposed as being instrumental in atherogenesis. It is believed that, along with vitamin E, carotenoids may function to protect LDL against oxidation. Once vitamin E is depleted, researchers believe that the carotenoids become involved as a second barrier, with LDL succumbing to oxidation only when the carotenoids are destroyed. Currently, much research is being conducted on the role of carotenoids and the development of cardiovascular disease.

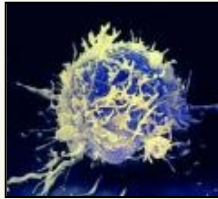


Other

Lycopene has also been linked to functional capacity in the elderly, indicating that deficiencies may significantly decrease self-care ability in affected individuals.



Animal and laboratory studies have shown that carotenoids exert immunomodulatory effects by influencing T and B lymphocytes, natural-killer cells, and macrophages. In patients with HIV infection, even with adequate dietary intake, several had specifically identified carotenoid deficiencies.



Pennington Nutrition Series, Number 4, 2005

Authors:

Heli Roy PhD, RD
Shanna Lundy, BS
Beth Kalicki

Division of Education

Phillip Brantley PhD, Director

Pennington Biomedical Research Center

Claude Bouchard PhD, Executive Director

Edited : October 2009

References:

Giovanucci et al. A Prospective Study of Tomato Products, Lycopene, and Prostate Cancer Risk. JNCI. 2002. 94:5 391-398

<http://pi.oregonstate.edu/infocenter/phytochemicals/carotenoids/index.html>

<http://sun.science.wayne.edu/~nfs/dietetics/lyco.htm>

The Pennington Biomedical Research Center is a world-renowned nutrition research center.

Mission:

To promote healthier lives through research and education in nutrition and preventive medicine.

The Pennington Center has several research areas, including:

- Clinical Obesity Research
- Experimental Obesity
- Functional Foods
- Health and Performance Enhancement
- Nutrition and Chronic Diseases
- Nutrition and the Brain
- Dementia, Alzheimer's and healthy aging
- Diet, exercise, weight loss and weight loss maintenance

The research fostered in these areas can have a profound impact on healthy living and on the prevention of common chronic diseases, such as heart disease, cancer, diabetes, hypertension and osteoporosis.

The Division of Education provides education and information to the scientific community and the public about research findings, training programs and research areas, and coordinates educational events for the public on various health issues.

We invite people of all ages and backgrounds to participate in the exciting research studies being conducted at the Pennington Center in Baton Rouge, Louisiana. If you would like to take part, visit the clinical trials web page at www.pbrc.edu or call (225) 763-3000.