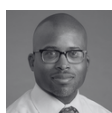


EXTERNAL FACULTY**JAIME ALMANDOZ, MD, MBA, FTOS**

Medical Director - Weight Wellness Program, Associate Professor of Internal Medicine
UT Southwestern

**JAMY ARD, MD**

Professor, Epidemiology and Prevention
Wake Forest University - School of Medicine

**MICHAEL COOK, MD FACS**

Associate Professor - Clinical, Surgery
LSU Health New Orleans

**VIVIAN FONSECA, MD, FRCP**

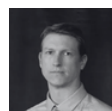
Associate Professor - Clinical, Surgery
LSU Health New Orleans

**TIMOTHY GILBERT, MD**

Endocrinologist
Imperial Health

**CATHERINE HUDSON, MD, MPH**

Assistant Professor - Clinical, Med-Gastroenterology
LSU Health New Orleans

**NEIL JOHANNSEN, PhD**

Professor
LSU School of Kinesiology

**JOE NADGLOWSKI**

President and Chief Executive Officer
Obesity Action Coalition

**WALTER PORIES**

Professor of Surgery, Biochemistry and Kinesiology
East Carolina University

**KATIE QUEEN, MD**

Pediatrician
Our Lady of the Angels Health

**EXTERNAL FACULTY****BRIAN SAUNDERS, MD**

Physician – Obesity and Weight Management Nutrition
Our Lady of the Lake Health

**GITANJALI SRIVASTAVA, MD**

Director, Vanderbilt Obesity Medicine
Vanderbilt University Medical Center

PENNINGTON BIOMEDICAL FACULTY**VANCE ALBAUGH, MD**

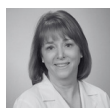
Assistant Professor of Metabolic Surgery
Pennington Biomedical Research Center

**JOHN APOLZAN, PhD**

Associate Professor – Research, Clinical Nutrition and Metabolism
Pennington Biomedical Research Center

**CLAUDE BOUCHARD, PhD**

Professor Emeritus
Pennington Biomedical Research Center

**LAURA BOYER, FNP-C**

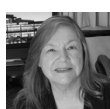
Administrative Director – Metamor Institute
Pennington Biomedical Research Center

**GEORGE BRAY, MD**

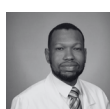
Professor Emeritus
Pennington Biomedical Research Center

**JUSTIN BROWN, PhD**

Associate Professor, Cancer Energenetics
Pennington Biomedical Research Center

**CATHERINE CHAMPAGNE, PhD, RD, LDN, FADA, FTOS, FAHA**

Professor, Dietary Assessment and Nutrition Counseling, Nutritional Epidemiology
Pennington Biomedical Research Center

**JEAN “JIMMY” DOMERCANT, MD**

Internal Medicine Specialist
Our Lady of the Lake Health

PENNINGTON BIOMEDICAL FACULTY

FRANK GREENWAY, MD
Chief Medical Officer, Clinical Trials Unit
Pennington Biomedical Research Center



STEVEN HEYMSFIELD, MD
Professor, Metabolism & Body Composition
Pennington Biomedical Research Center



PETER KATZMARZYK, PhD, FTOS
Professor, Associate Executive Director of Population and Public Health
Pennington Biomedical Research Center



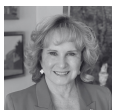
JOHN KIRWAN, MSc, PhD, FAcSM
George A Bray Jr. Endowed Super Chair in Nutrition, Executive Director
Pennington Biomedical Research Center



ERIC RAVUSSIN, PhD
Boyd Professor, Human Translational Physiology
Pennington Biomedical Research Center



LEANNE REDMAN, MS, PhD
Professor, Chief Academic Officer, Associate Executive Director of Scientific Education
Pennington Biomedical Research Center



DONNA RYAN, MD
Professor Emeritus
Pennington Biomedical Research Center



PHILIP SCHAUER, MD, FACS, FASMBS
Professor of Metabolic Surgery, Pennington Biomedical Research Center
Director, Metamor Institute



PRACHI SINGH, PhD
Associate Professor, Sleep and Cardiometabolic Health Laboratory
Pennington Biomedical Research Center